

SUBLEASE

178 RIDGE ROAD

DAYTON, NJ



FOR SUBLEASE: 19,200 SF

OFFICE	2,567 SF	CLEAR HT	22'
WAREHOUSE	16,633 SF	COLUMNS	40'x40'
YEAR BUILT	1990	SPRINKLER	.33/3000
TAILGATES	FOUR (4)	POWER	200A 3P
DRIVE-INS	ONE (1)	TOTAL BLDG	48,000 SF

FOR MORE INFORMATION

JASON FISCH *BROKER, VP OF LEASING*
JASON.FISCH@GREEKDEVELOPMENT.COM
732.613.3637

PATRICK REISTROM *LEASING ASSOCIATE*
PATRICK.REISTROM@GREEKDEVELOPMENT.COM
732.613.3624



33 COTTERS LANE
EAST BRUNSWICK, NJ 08816
732.257.7353

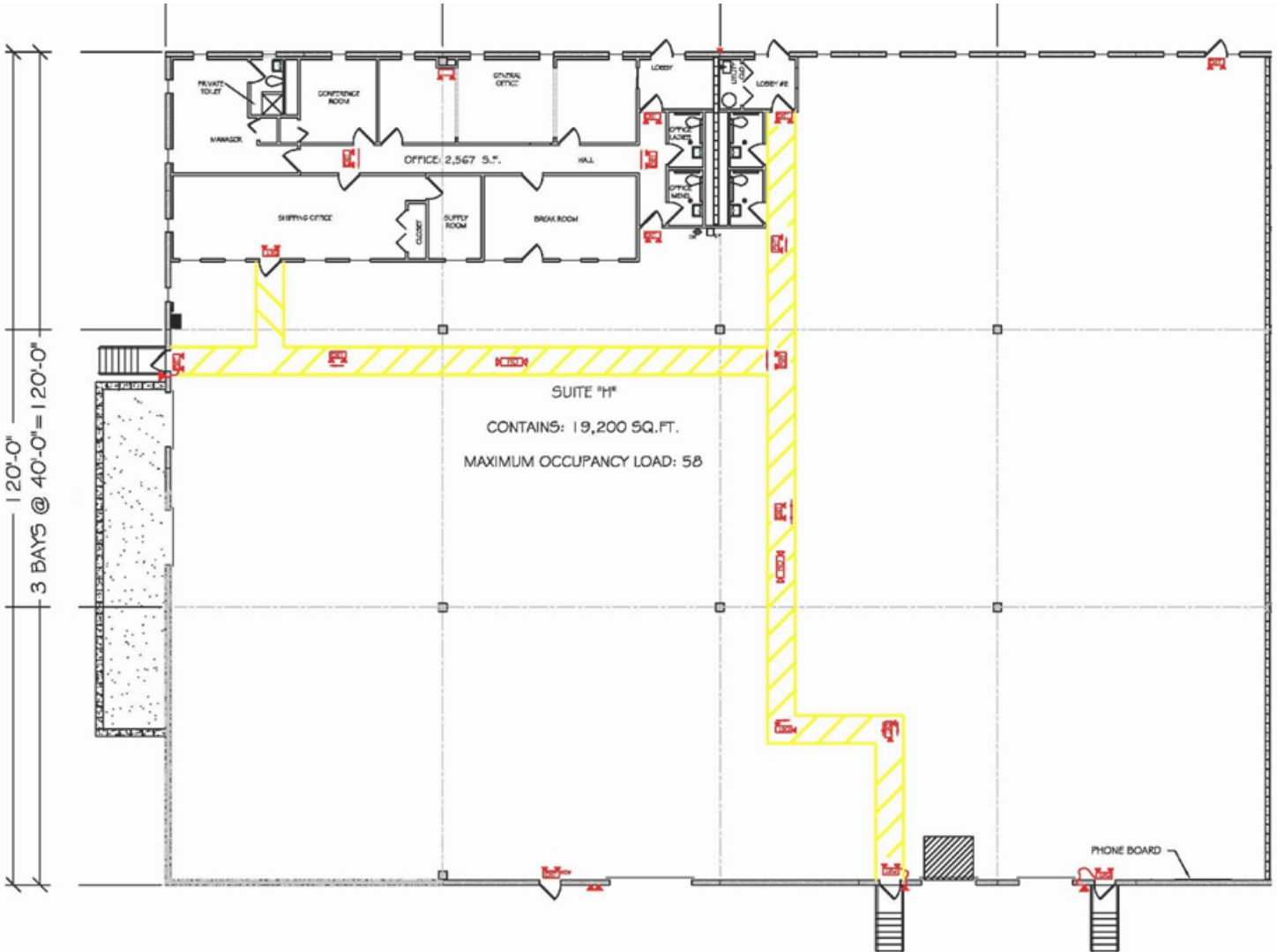
SEE MORE AVAILABILITIES AT WWW.GREEKDEVELOPMENT.COM

SUBLEASE

178 RIDGE ROAD

DAYTON, NJ

FLOOR PLAN



FOR MORE INFORMATION

JASON FISCH BROKER, VP OF LEASING
JASON.FISCH@GREEKDEVELOPMENT.COM
732.613.3637

PATRICK REISTROM LEASING ASSOCIATE
PATRICK.REISTROM@GREEKDEVELOPMENT.COM
732.613.3624



33 COTTERS LANE
EAST BRUNSWICK, NJ 08816
732.257.7353

SEE MORE AVAILABILITIES AT WWW.GREEKDEVELOPMENT.COM